

# Smart Wireless Digital Room Thermostat

---

This surface-mounted radio thermostat has been developed to be able to switch electric and conventional heating systems on and off using a set temperature and time from anytime anywhere.



## Functions

---

- ✓ WiFi remote control
- ✓ Large display can be clearly read with the background lighting.
- ✓ Easy to fit thermostat and receiver.
- ✓ Knob button make it easy to use.
- ✓ 4 periods of each day programmable
- ✓ Child lock
- ✓ Open window detection
- ✓ The display shows the set temperature as well as the measured temperature, time.
- ✓ Temperature display in degrees Celsius.
- ✓ The thermostat is supplied with a wall-fixing frame, base and a very compact receiver (surface-mounted).

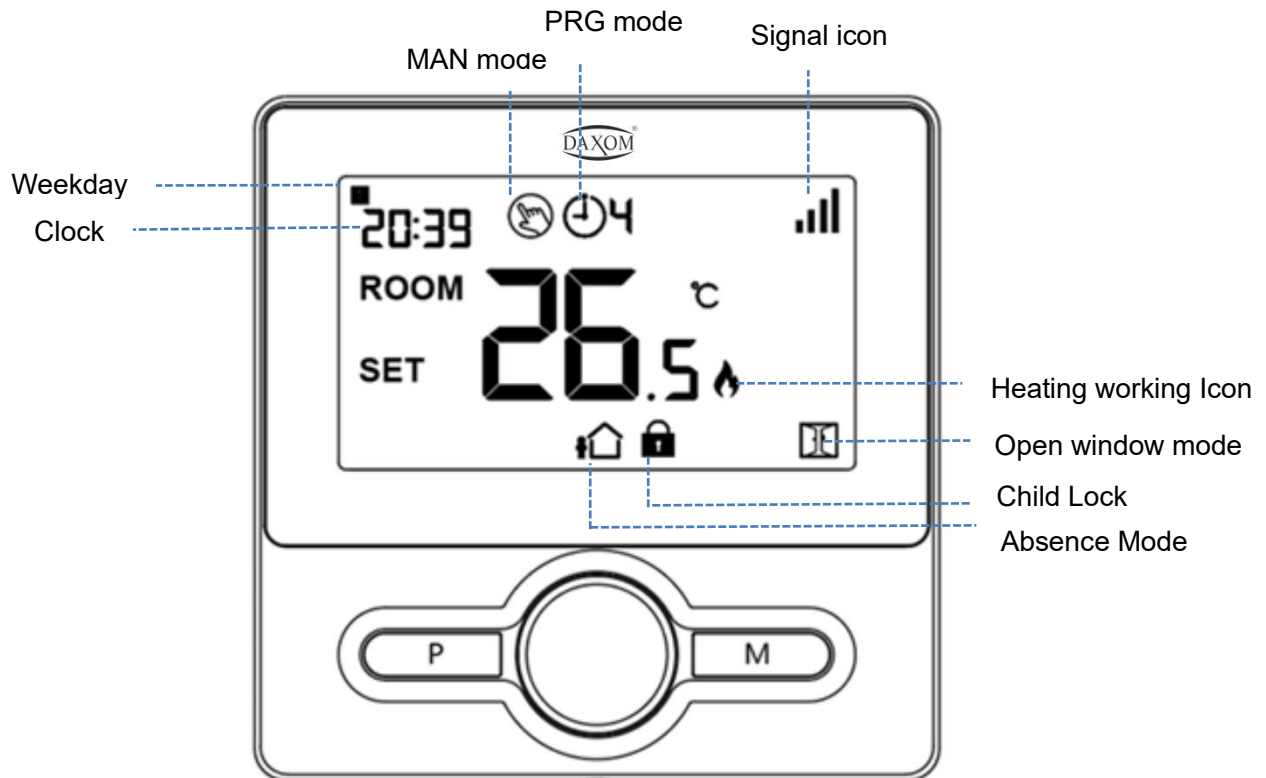
## Technical Data

---

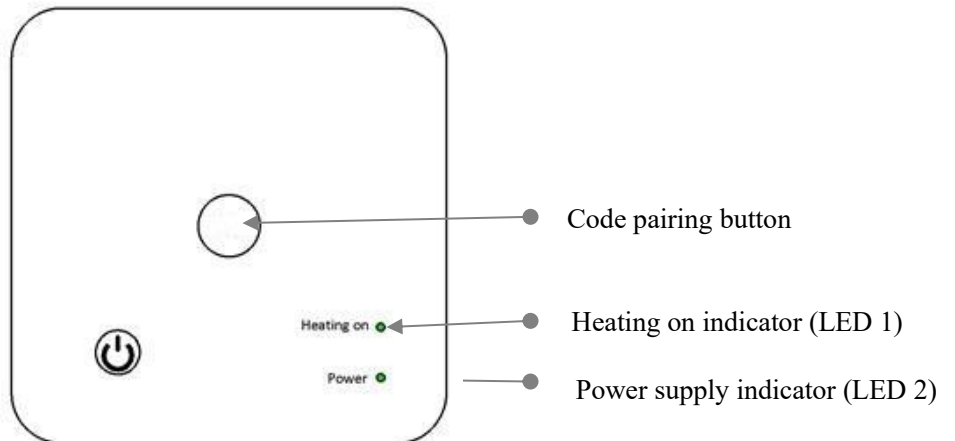
|                                 |   |
|---------------------------------|---|
| Thermostat operating voltage:   | 2*AAA battery power supply                      |
| Backup storage:                 | EEPROM  |
| Receiver operating voltage:     | 230 VAC, 50/60 Hz                               |
| Maximum voltage / (ohmic) load: | 250 VAC/10 A.                                   |
| Frequency:                      | 868 MHz & 2.4Ghz WiFi                           |
| Channel selection:              | By programming the thermostat and the receiver. |
| Switching options:              | 7 days, 4 periods each day.                     |
| Receiver switch contacts:       | NO and NC.                                      |
| Temperature settings:           | 5°C ~ 35°C, 0.5°C increments.                   |
| Accuracy:                       | +/- 0.5°C                                       |
| Thermostat dimensions:          | Surface mounted, 98*98*27MM                     |
| Receiver dimensions:            | Surface mounted, 86* 86*26 mm                   |
| Color:                          | White   |
| IP protection rating:           | 20.   |
| Certification:                  | CE, RoHS  |

# Smart Wireless Digital Room Thermostat


## Display



## Code Pairing



**I. Normally thermostat and receiver are paired at factory, if not this case, you can follow below step to pair.**

- 1) Long press the code pairing button on the receiver until LED 1 is flickering quickly.
- 2) Turn off thermostat by press middle on/off button, and long press **M** button until the code shows on the screen, then adjusting the knob to left, the signal icon  start flashing
- 3) Wait for a while, LED1 stops flickering. Code pairing done

# Smart Wireless Digital Room Thermostat

---

## II. WIFI connection with App

Please download “Smart life” APP from Google play or app store. Once download, the app will ask you to register your device. Enter your email, select the country you live in and create a password for your Smart life account.



You can connect to app by Bluetooth scan or wifi connection, Bluetooth is more recommended.

### Bluetooth Connection Method:

- 1) Enable Bluetooth function on your phone
- 2) Add device by press “+” button at top right corner
- 3) Long press **Pairing button** on receiver to enter WiFi connection mode, the LED will flash quickly
- 4) App is searching for nearby Bluetooth device. Press “ Add “
- 5) Choose Wi-Fi and enter password
- 6) Wait till device add successfully

**Notes: When device is never connected (first time or been removed), app may show device to be add as step. 4 directly.**






### Wi-Fi Connection Method:

- 1) Add device by press “+” button at top right corner
- 2) Press “Small Home Applicant” and select “Thermostat (BLE+Wi-Fi)” on the list.
- 3) Select 2.4Ghz Wi-Fi Network and enter password, and press “Next”.
- 4) Long press **Pairing button** on receiver to enter WiFi connection mode, the LED will flash quickly.
- 5) Press “Next” on app, tick “Blink Quickly” on phone to add device.
- 6) Wait a moment till connection done. The LED on receiver will stop flashing. Wifi connection success.  
If the LED still flash slowly, the connection fail, please try again from step. 5.

**Notes: If device is connected and keeps online, when you want to create new connection, please remove device from app or clear all pairing on receiver.**

## Mode Select

---

Press **M** button to select Manual Mode , Absence Mode  or PRG mode   
Press **P** button to switch Manual Mode , or PRG mode 

## Clock Adjustment

---

The date and time setting is automatically updated when the thermostat is connected to Wi-Fi via the application. If this does not happen, follow the procedure below:

# Smart Wireless Digital Room Thermostat

Press and hold **M** button for 3s, set the clock by adjusting the knob to left or right, each press of **M** button will go to next item setting.

| Menu | Description           | Menu | Description            |
|------|-----------------------|------|------------------------|
| 01   | Clock setting- Minute | 03   | Clock setting- Weekday |
| 02   | Clock setting- Hour   |      |                        |

## PRG setting

**(Recommended choice)** After connecting the system to the WiFi system, program everything via the Application.

**(Alternative choice without using the application)** Press and hold **P** button for 3s to enter program setting. Set the schedule (Weekday-Period-Start time-Temp.) by adjusting knob to left or right to change value setting, each press of **P** button will go to next item setting.

### Default Setting:

| Period           | 1    |      | 2    |      | 3     |      | 4     |      |
|------------------|------|------|------|------|-------|------|-------|------|
|                  | Time | Temp | Time | Temp | Time  | Temp | Time  | Temp |
| 12345(Mon.-Fri.) | 7:00 | 22°C | 8:30 | 19°C | 17:00 | 22°C | 22:00 | 19°C |
| 6(Sat.)          | 8:00 | 22°C | 8:30 | 22°C | 17:00 | 22°C | 22:00 | 19°C |
| 7(Sun.)          | 8:00 | 22°C | 8:30 | 22°C | 17:00 | 22°C | 22:00 | 19°C |

## Temperature Calibration

This feature used to calibrate thermostat's room temperature display when actual room temperature different from thermostat showed (refer to the menu 01 of parameter settings). For example, if actual room temperature 21.5°C, but thermostat shows 23°C, then you can set this value to -1.5, then thermostat will show 21.5°C.

## Frost Protection

This is the temperature maintained when the thermostat is in Frost Protection Mode (refer to the menu 05 of parameter settings). If room temperature below 5°C (Default), thermostat will turn on heating till room temperature arrive 5°C (Default).

## Switching Differential

This function allows you to increase the switching differential of the thermostat (refer to the menu 09 of parameter settings). The default is 0°C which means that with a set temperature of 20°C, the thermostat will switch the heating on at 19.5°C and off at 20.5°C. With a 0.5°C differential, the heating will switch on at 19°C and off at 21°C.


# Smart Wireless Digital Room Thermostat

## Child Lock

Under child lock ON (refer to menu11 of parameter setting), the buttons will lock once backlight off. Press **ON/OFF** button for 3s to unlock it for temporary adjust.

## Open Window Detection(OWD) Function

When the Open Window detect function is enabled in the parameter setting, the system will automatically stop heating when it detects a sudden drop of room temperature (2°C in 15 minutes as default). This is normally caused when a window or door is opened without turning off the heating device.

The device will return to the previous mode of operation after 30mins, then  disappear. Press any button will exit OWD function during the heating off period.

## Parameter Setting

Turn off thermostat, long press **ON/OFF** button to enter parameter setting page, each press of **ON/OFF** button will go to next item setting. By adjusting knob to left or right to change value setting. After setting, wait till backlight off to exit.

| <u>Menu</u> | <u>Description</u>   | <u>Range</u>  | <u>Default Value</u> |
|-------------|--|---|----------------------|
| 01          | Temp. calibration for internal sensor                        | -8 °C ~8 °C   | 0°C                  |
| 02          | Set Point Max.   | 5 °C ~35°C  | 35 °C                |
| 03          | Set Point Min.   | 5 °C ~35°C  | 5 °C                 |
| 05          | Frost Protection Temp.                                       | 5 °C ~15°C  | 5 °C                 |
| 09          | Dead zone/Hysteresis/Switching Differential                  | 0~3°C   | 0°C                  |
| 11          | Child Lock   | 1: Lock 0: Unlock   | 0                    |
| 12          | Open window detect function                                  | ON<br>OFF   | OFF                  |
| 13          | OWD Detect Time  | 2~30mins  | 15mins               |
| 14          | OWD Drop temp. select<br>(within detect time)                | 2°C.3°C.4°C   | 2°C                  |
| 15          | OWD Delay time select<br>(Return to previous working status) | 10~60min  | 30mins               |
| 17          | Factory reset  | 1: Yes, and then press On/off button for 5s,wait until thermostat restart |                      |
|             | Software Number  | Read Only   |                      |
|             | Version Number   | Read Only   |                      |
| 31          | Battery Power indication                                     | Read Only   |                      |

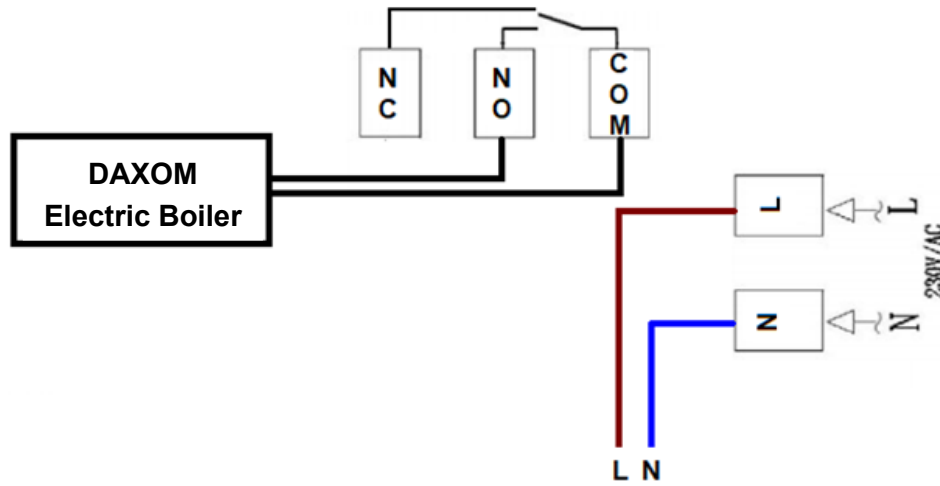
# Smart Wireless Digital Room Thermostat

---

## Wiring Diagram

---

Voltage-Free for boiler/heat pump control:



# Smart Wireless Digital Room Thermostat

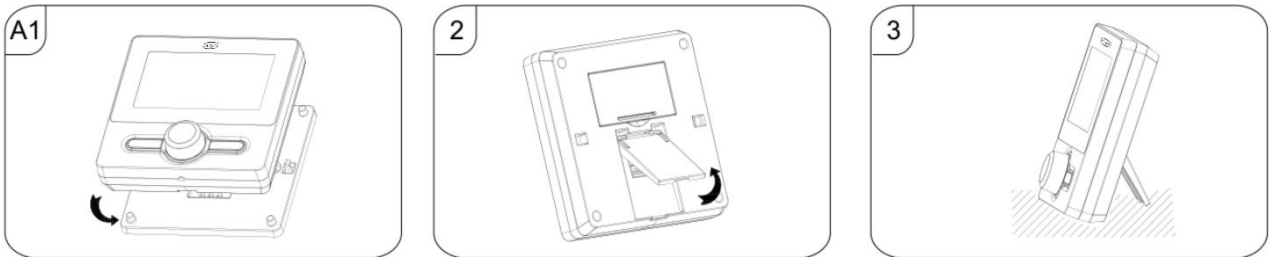
## Installation

Mount the thermostat at eye level. Read the instructions fully so you get the best from our product.

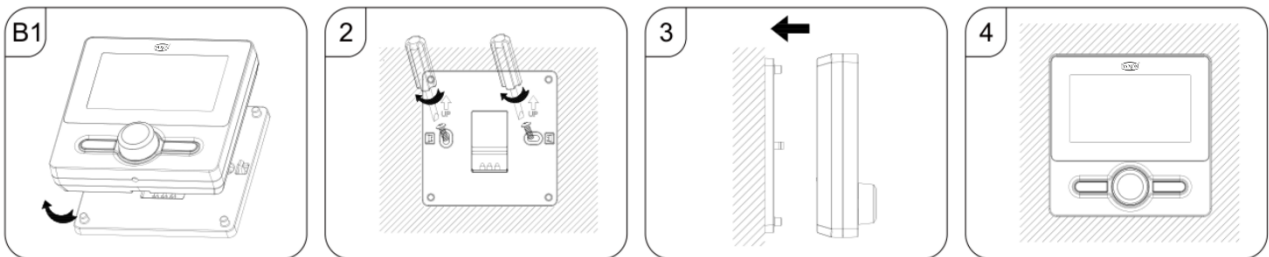
Do not install near to a direct heat source as this will affect functionality. Do not push hard on the LCD screen as this may cause irreparable damage.

### Install Transmitter:

#### Put on Desk



#### on wall



### Installation Receiver:

1. Using a small screw driver, slightly loosen the screw located at the base of the RF-Switch. You can then carefully separate the front panel from the back plate.
2. Position the RF-Switch back plate on the wall, fixing into place using the screws provided.
3. Terminate the cables to the RF-Switch as shown in the wiring diagram
4. Mount the front panel onto the back plate, tighten the retaining screw on the base.
5. Switch on the power supply, the power LED will illuminate.

